

**FARMPOWER**

**BETTER  
IMPLEMENTS**  
**BETTER  
YIELD**



# FRONT END LOADER 3000

MODEL	3000
Suitable (HP)	20-30
Bucket Type	Standad [4 in 1 - optional]
Bucket Size (mm)	1200
Safe Working Load (with Standard Bucket) (kgs.)	280
Max. Lift Height to Pivot pins mm (A)	1900
Max. Dump Height mm (B)	1395
Dig Depth (mm) ( C )	90
Crowd Angle (D)	40°
Dump Angle ( E )	51°
Raising Time of Boom (without Load) (secs.)	2.7
Lowering Time of Boom (without Load) (Secs.)	2.05
Dump Attachment Roll Back Time (Secs.)	2.65
Retract Attachmnet Dumping Time (Secs.)	2
Working Pressure on Hydraulic in (Bar)	180
Weight of the Loader (kgs.)	250 Kgs.



# FRONT END LOADER 9000

MODEL	7000	9000
Suitable (HP)	75	90
Bucket Type	Standad (4 in 1 - optional)	Standad (4 in 1 - optional)
Bucket Size (mm)	1800	2100
Safe Working Load [with Standard Bucket] (kgs.)	1000	1000
Max. Lift Height to Pivot pins mm (A)	3457	3457
Max. Dump Height mm (B)	2650	2650
Dig Depth (mm) ( C )	300	300
Crowd Angle (D)	45°	44°
Dump Angle ( E )	55°	55°
Raising Time of Boom (without Load) [secs.]	2.7	2.7
Lowering Time of Boom (without Load) [Secs.]	2.05	2.05
Dump Attachment Roll Back Time [Secs.]	2.65	2.65
Dump Attachment Roll Back Time [Secs.]	2	2
Retract Attachmnet Dumping Time (Secs.)	180	180
Working Pressure on Hydraulic in (Bar)	800 Kgs.	800 Kgs.
Weight of the Loader (kgs.)		



# ROTAVATOR

## FEATURES AND BENEFITS

Rotary Tiller is a PTO driven implement used to cut, pulverize, mix & level the soil in single pass.

It is suitable for various soil conditions.

Strong & sturdy design for hassle free performance & better durability.

Helical arrangement of blades specially designed for better performance & putting less load on Rotary Tiller.

Covers large portion of land in lesser time.

Available in both Single Speed as well as Multi Speed gear box option.

### DESCRIPTION

#### MINI SERIES

SIZE (FEET)	3	3.5	4	3	3.5	4
MAKE	FARMPOWER	FARMPOWER	FARMPOWER	FARMPOWER	FARMPOWER	FARMPOWER
SERIES	MINI SERIES	MINI SERIES	MINI SERIES	MINI SERIES	MINI SERIES	MINI SERIES
SIZE (mm/Feet)	800/2.7	1000/3.3	1200/3.11	800/2.7	1000/3.3	1200/3.11
overall Width (mm)	1000	1200	1400	1000	1200	1400
overall Height (mm)	NA	NA	NA	NA	NA	NA
Tilling Width (mm/inch)	800	1000	1200	800	1000	1200
Tractor Power HP (KW)	15-20	20-25	25-30	15-20	20-25	25-30
3 point Hitch Type	cat-1	cat-1	cat-1	cat-1	cat-1	cat-1
No. Of Blades (L)	16	20	24	16	20	24
No. Of Blades (J)	24	28	32	24	28	32
Primary transmission	Single Speed			Single Speed		
Transmission Type	Gear Drive			Gear Drive		
Max. Working Depth (mm/Inch)	10.16/4 to 152/6					
Drive Line Safety Device	Shear Bolt					
Rotor RPM (PTO)	540	540	540	540	540	540
Weight (Kg)	172	188	203	192	210	240



GEAR DRIVE



HELICOIDALLY BLADE ARRANGEMENT



MULTI-SPEED GEAR BOX





## LIGHT DUTY SERIES

### DESCRIPTION

SIZE (FEET)	4	5	6	7	8
MAKE	LIGHT DUTY	LIGHT DUTY	LIGHT DUTY	LIGHT DUTY	LIGHT DUTY
SERIES	FARMPOWER	FARMPOWER	FARMPOWER	FARMPOWER	FARMPOWER
SIZE (mm/Feet)	1219/4	1524/5	1828/6	2133/7	2438/8
overall Width (mm)	1524	1803	1955	2209	2438
Tilling Width (mm/inch)	1219	1498	1676	2209	2438
Tractor Power HP (KW)	25	30	35	40	45
3 point Hitch Type	CAT-II	CAT-II	CAT-II	CAT-II	CAT-II
No. Of Blades (L)	30	36	42	48	54
Primary transmission			Single Speed		
Transmission Type			Gear Drive		
Max. Working Depth (mm/Inch)			10.16/4 to 152/6		
Drive Line Safety Device	shear Bolt	shear Bolt	shear Bolt	shear Bolt	shear Bolt
Rotor RPM (PTO)	540	540	540	540	540
Weight (Kg)	355	380	405	425	450

## LIGHT DUTY SERIES - J BLADE SERIES

### DESCRIPTION

MODEL	4	5	6	7	8
MAKE	FARMPOWER	FARMPOWER	FARMPOWER	FARMPOWER	FARMPOWER
SERIES	LIGHT DUTY	LIGHT DUTY	LIGHT DUTY	LIGHT DUTY	LIGHT DUTY
SIZE (mm/Feet)	1219/4	1524/5	1828/6	2133/7	2438/8
overall Width (mm)	1524	1803	1955	2209	2438
Tilling Width (mm/inch)	1219	1498	1676	2209	2438
Tractor Power HP (KW)	25	30	35	40	45
3 point Hitch Type					
No. Of Blades (J)	60	66	72	78	84
Primary transmission			Single Speed		
Transmission Type			Gear Drive		
Max. Working Depth (mm/Inch)			10.16/4 to 152/6		
Drive Line Safety Device	shear Bolt	shear Bolt	shear Bolt	shear Bolt	shear Bolt
Rotor RPM (PTO)	540	540	540	540	540
Weight (Kg)	375	400	425	445	470

## LIGHT DUTY SERIES

### DESCRIPTION

SIZE (FEET)	4	5	7	7	8
MAKE	FARMPOWER	FARMPOWER	FARMPOWER	FARMPOWER	FARMPOWER
SERIES	LIGHT DUTY	LIGHT DUTY	LIGHT DUTY	LIGHT DUTY	LIGHT DUTY
overall Width (mm)	1524	1803	1955	2209	2438
Tilling Width (mm/inch)	1219	1498	1800	2209	2438
Tractor Power (HP)	25	30	35	40	45
3 point Hitch Type	CAT-II	CAT-II	CAT-II	CAT-II	CAT-II
No. Of Blades (L)	42	48	54	60	66
Primary transmission			Single Speed		
Transmission Type			Gear Drive		
Max. Working Depth (mm/Inch)			10.16/4 to 152/6		
Drive Line Safety Device	shear Bolt	shear Bolt	shear Bolt	shear Bolt	shear Bolt
Rotor RPM (PTO)	540	540	540	540	540
Weight (Kg)	360	385	410	430	455

# SPRING LOADED CULTIVATOR

## FEATURES AND BENEFITS

Spring Loaded Cultivator is used for the toughest operations.

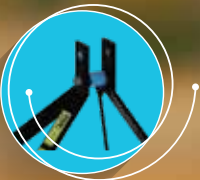
Depth can be achieved up to 7 to 9 inches.

Spring Loaded Cultivator enables swing back under break-away pressure and passes over the obstruction. It then returns to the working position without affecting the working depth of the implement.

It comes with shovel and forged tynes provides better durability and the 3 point linkage allows the implement to attach and detach easily.

## TECHNICAL SPECIFICATIONS

DESCRIPTION	7 TYNE	9 TYNE	11 TYNE	13 TYNE	15 TYNE
Size of Tyne			25 mm (Thickness)		
No. Of Coils			Spring coil (50)	900X2932X965	900X3390X965
LxWxH (mm)	900X1610X965	900X2020X965	900X2475X965	26	30
No. of Springs	14	18	22	2768	3224
Working width (mm)	1400	1856	2312		
Spacing between tynes			230	393	425
Weight (Approx. in kgs.)	225	280	340		
Suitable Tractor HP Range	35-50			55-70	70-80



HARDENING BUSH



SPRING



MAIN FRAME AND  
3 POINT LINKAGE



SHOVEL AND  
FORGED TYNE



# COMPACT HARROW

## FEATURES AND BENEFITS

High quality Boron steel disc with better harness ensures quality seed bed preparation.

Adjustable gang axles.

High quality seals prevent the entry of mud and water into bearing and hubs.

Available in 3 point linkage mounting and trailed type easy to attach and detach.

Gives better pulverization and breaks clods finely.

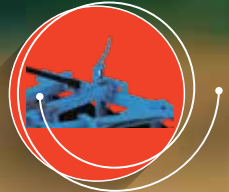
MINI SERIES	16 DISC	18 DISC	20 DISC	22 DISC
Type Mounting		Three Point Linkage - CAT II		
Disc Type		Front - Notched, Rear - Plain		
Disc Spacing (mm)		230		
Max. Depth (mm)		150 TO 200 (Depends on soil moisture and field condition)		
Width Of Cut (mm) (Adjustable)	1900	2100	2200	2450
Suitable Tractor HP Range	50-60			80-90



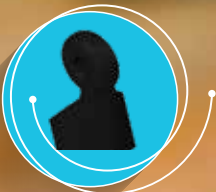
3 Point Linkage  
and Towbar



Boron Disc



Gang Angle  
Adjustable on Handle



Bearing Housing with  
Greasing Point



# MB PLOUGH

## FEATURES AND BENEFITS

MB Plough is widely used as a primary implement for tillage application.

MB Plough is made with high quality, wear-resistant steel blade / shear plate penetrates into the soil and makes a horizontal cut.

Bar point bottom ensures life as it can be extended or reversed till the last possible length.

It helps to increase the germination of soil and to form bed preparation for wheat, sugarcane, cotton and sorghum crops.

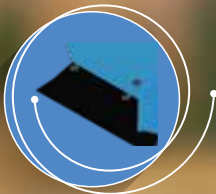
DESCRIPTION	2 MB PLOUGH	3 MB PLOUGH	3 MB PLOUGH
Width of Cut (inch)	24"	36"	48"
Mounting Cat		CAT-II	
Overall Dimensions (mm)	1370x920x1030	1700x1140x1030	2200x1340x1030
Depth of Cut (mm)		8 to 12	
Total Weight (kg)	230	320	425
Suitable Tractor HP Range	45 to 55	55 to 70	70 to 90



3 Point Linkage



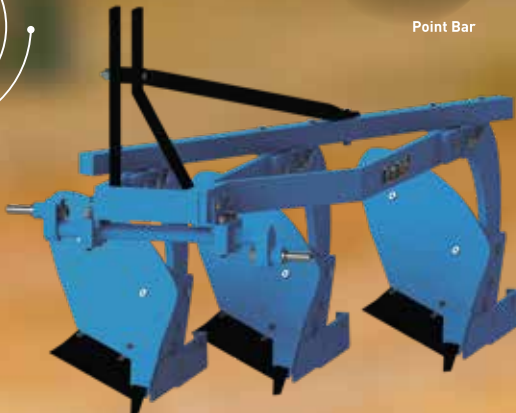
Point Bar



Shear Plate



HD Main Frame





# COMPACT HARROW

## FEATURES AND BENEFITS

Disc Harrow is used to break the clods with deeper penetration. Both disc gangs are offset at an angle to ensure that no soil remains uncut and heavy crop residue with organic matter is effectively buned. Given screw enables depth control, so different depths can be attained as per requirement. Three point linkage attachment enables the implement to attach and detach easily. High quality Boron steel discs don't easily wear and tear. Thus, maintenance is low. High quality bearings, hubs and seals ensure smooth operation and put minimum load on the tractor and require less maintenance.

## TECHNICAL SPECIFICATIONS

DESCRIPTION	12 DISC	14 DISC	16 DISC	18 DISC	20 DISC	22 DISC	24 DISC
Type of Mounting	CAT-II						
Disc Type	Front - Notched, Rear - Plain						
Disc Spacing (mm)	225						
Width of Cut (mm)	1220	1450	1680	1930	2220	2450	2650
Suitable Tractor HP Range	35-50		50-60		60-70		80-90



Boron Disc



Main Frame & 3 Point Linkage

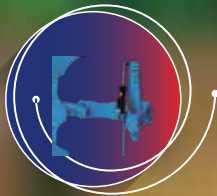


# REVERSIBLE PLOUGH

## FEATURES AND BENEFITS

Reversible plough is used for deep opening of soil and loosening the soil. It cuts the soil in clods and through it into the surface and breaks the soil clods in smaller pieces. Reversible plough also helps in water and air retention inside soil and improves germination. Reversible plough comes with shear bolt, which protects the implement from damage and also provides driver and tractor safety.

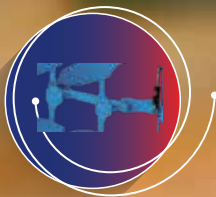
DESCRIPTION	2 BOTTOM	3 BOTTOM
Sizes of Board (inch)		12,14,16
Width of Cut (inch)	20,24,28	30,36,42
Depth of Cut (inch)		9-16
Size of Frame mm		HD Sq. Pipe 95X95 mm
Material of Shear Bar & Land Slide		Boron Steel
Actuation		Hydraulic
Safety		Shear Bolt
Weight (kg)	415	540
Suitable Tractor Hp Range	50-60	70-90



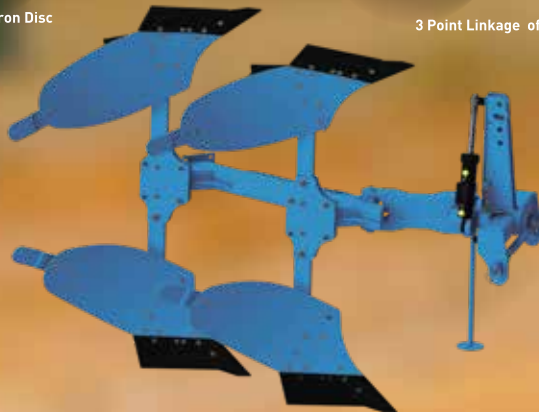
Boron Disc



3 Point Linkage of Casting



Easy to Adjustment of Plough



# DISC PLOUGH

## FEATURES AND BENEFITS

It is useful in hard and dry trashy land conditions and in soils where scouring is a major problem. High quality bearings and hubs ensure smooth operation and put minimum load on the tractor. High quality seals prevent the entry of mud and water into the bearings and hubs.

## TECHNICAL SPECIFICATIONS

DESCRIPTION	2 DISC	3 DISC	4 DISC	5 DISC
Disc Size (mm), Material	680 mm x 5/6 thick (High Carbon or Boron Steel)			
Main Frame	108 mm			
Type Of Disc	Plain Disc			
Colter Wheel (Dia) 220	20"			
Axle Type (Dia), Material	30 mm/EN			
Working Width Range (mm Approx.)	600-700	751-840	841-980	981-1120
Working Depth Range (mm Approx.)	150-250 (Depends on soil moisture and field condition)			
Spacing Between Disc (mm)	560			
Overall Dimensions (mm) (LxWxH)	600-700	751-840	841-980	3630X1460X1250
Weight (kg)	285	385	515	600
Suitable Tractor HP Range	35-50	50-70	70-80	90-100



Colter Disc



3 Point Linkage



Easy to Adjustment of Plough



## ALSO AVAILABLE

### SUB-SOILER

HYDRAULIC REVERSIBLE  
DISC PLOUGH

POLY DISC HARROW

LAND LEVELLER

LASER LEVELLER

SHREDDER

RIDGER WITH TYRE

TRACTOR MOUNTED  
BOOM SPRAYER

TOT COMBINED  
HARVESTER

### BED FORMER

TIPPING TRAILER(2/4 WHEEL)

CAGE WHEEL (HALF/FULL)

POTATO PLANTER

RAISED BED PLANTER

POTATO DIGGER

MULTI CROP THRESHER

POST HOLE DIGGER

SELF PROPELLED  
COMBINED HARVESTER

ESCORTS AGRI MACHINERY

INTERNATIONAL BUSINESS DIVISION Plot no. 2

Sector - 13 , Faridabad (NCR) India Phone : +91-129-2575507/5292

Website : [www.escortsagri.com](http://www.escortsagri.com) | E-Mail : [international@escorts.co.in](mailto:international@escorts.co.in)

Follow us on

